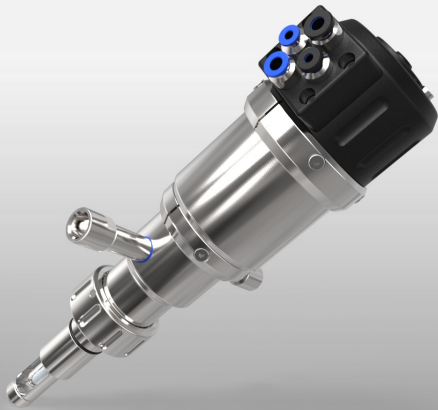


EXtract 815 stainless steel for welding socket DN25



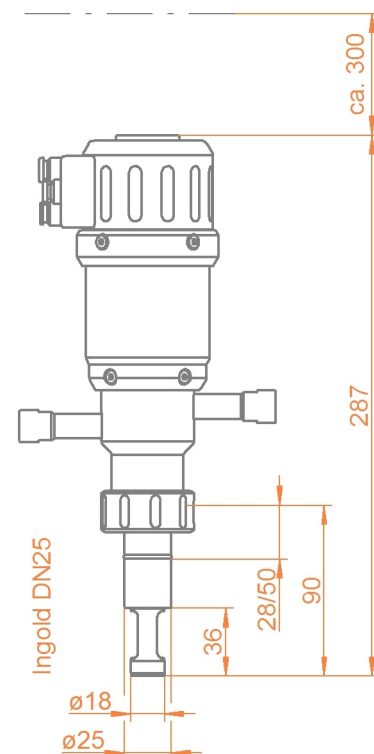
- › Robust design, integrated scraper
- › Extension of sensor-lifetime and reducing of maintenance efforts
- › Automatic safety lock while sensor is removed
- › Plug and play installation, colour- and size-coded connection system
- › Integrated limit switches
- › Immersion length up to 90mm
- › Up to 16 bar and 140 °C

EXtract 815 is a retractable holder made of stainless steel or Alloy C22 for installation on welding sockets DN25 / G1 1/4"

Specifications

Process pressure	0...16bar
Process temperature	-10...140°C
Ambient temperature	-10...70°C
Immersion length	up to 90mm
O-ring position	28mm / 50mm
Sensors	Ø12-225mm PG 13.5
Materials	stainless steel 1.4404 / 316L, Alloy C22 (2.4602)
Sealings	EPDM, FPM (Viton), FFKM (Kalrez)
Process connection	G1 1/4" (DN25)
Cleaning ports	G1/8", G1/4", FNPT 1/4"
Operating power	compressed air 4...6 bar
Limit switches	pneumatic, integrated

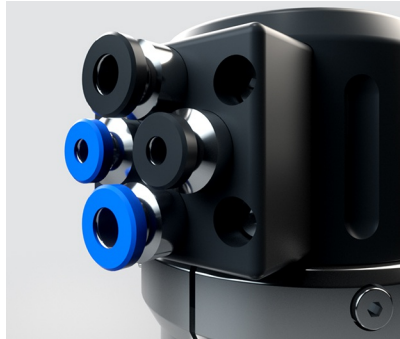
Dimensions



EXtract 815 stainless steel for welding socket DN25



Protective cage with sensor in measuring position



Connection board EXtract



Installation on EXtract 820 with flow vessel EXflow720

Ordercode

Code	Material (wetted parts)	Delivery
4404	Stainless steel 1.4404 / 316L	2 weeks
HC22	Alloy C22 2.4602	4 weeks

Code	Sealing Material (wetted sealings)	Delivery
EPD	EPDM/FDA/USP VI	2 weeks
FPM	FPM (Viton)	2 weeks
FKM	FFKM (Kalrez)	3 weeks

Code	Sensor type	Delivery
225	225mm PG 13,5 gel-filled	2 weeks
280	280mm PG 13,5 liquid filled	3 weeks

Code	Process Connection	Delivery
IN28	Ingold DN25 G1 1/4" O-Ring-position 28mm	2 weeks
IN50	Ingold DN25 G1 1/4" O-ring position 50mm	3 weeks

Code	Cleaning Connection	Delivery
G18	G 1/8" female thread	2 weeks
G14	G 1/4" female thread	2 weeks
N14	1/4" NPT female thread	2 weeks

Code	Position switch	Delivery
PN	pneumatic	2 weeks